

MAX HD2 IP67

Dual 4G LTE Outdoor Mobile Router



Compatible With:



*Selected models

The HD2 IP67 offers dual embedded cellular modems and PoE support, all encased in a shock and vibration certified, waterproof enclosure that's more than a match for almost any environment.



Dual Cellular for Multiple Carrier.

The HD2 IP67 includes two built-in outdoor 4G LTE/3G modems. It allows you to use the same or different cellular providers for bandwidth bonding or eliminating blind spots.

List of supported 4G LTE carriers at: peplink.com/lte-networks/

SpeedFusion™
Bonding Technology



SpeedFusion Bandwidth Bonding and Seamless Failover.

SpeedFusion bandwidth bonding technology bonds all connected bandwidth into a single superfast stream, using the same or different cellular providers.



Water-proof



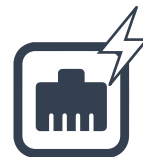
Dust protected



Lightning Immunity



Shock and Vibration



Super-Duty IP67 Enclosure. Shock and Vibration Certified.

Its waterproof IP67 metal enclosure stands up to dust, vibration, and inclement weather. And, it is certified shock and vibration resistant, making it a great choice for construction, drilling, and other heavy-duty applications.

Optional PoE Input.

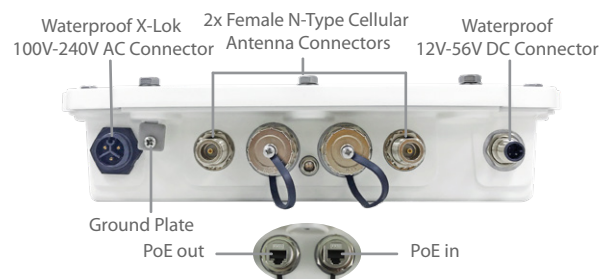
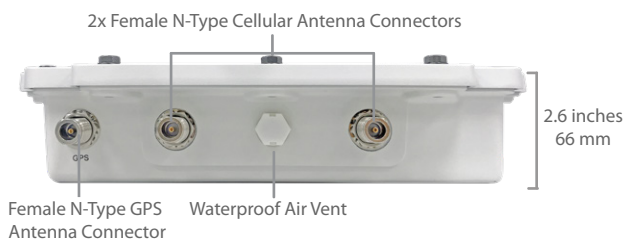
Cut down on cabling and simplify deployments. The HD2 IP67 supports 802.3at PoE input, so one wire is all you need for both connectivity and power. 802.3at PoE Injector is available separately.

Specifications

MAX HD2 IP67

WAN Interface	1x 10/100/1000M Ethernet Port 2x Embedded LTE Modems
LAN Interface	1x 10/100/1000M Ethernet Ports
Router Throughput	400Mbps
Recommended Users	25-150
Cellular Antenna Connector	4x Female N-Type Cellular Antenna Connectors 1x Female N-Type GPS Antenna Connector
Power Input	Power over Ethernet 802.3af PoE+ [#] AC Input 100V-240V*, DC Input 12V-56V
Power Consumption	25W (max.)
Dimensions	9.0 x 12.2 x 2.6 inches 230 x 310 x 66 mm
Weight	5.84 pounds 2.65 kg
Operating Temperature	-40° – 149°F -40° – 65°C
Humidity	15% – 95% (non-condensing)
Certifications	FCC, CE, RoHS, IC RF Port Lightning Immunity: ITU-T K.20 (+/- 1.5 kV) Shock and Vibration Resistance: EN 61373:2010 IEC 61373:2010
Warranty	1-Year Limited Warranty

[#] PoE Injector is available separately.
* Support PSE output.



Ordering Information

	Product Code	Carrier/Region	Cellular Standard	4G Bands	3G Bands
LTE	MAX-HD2-M-LTE-E-IP67	Europe/International	LTE	4G LTE: B1, B3, B5, B7, B8, B20, B38 (TDD), B40(TDD), B41 (TDD)	WCDMA/HSDPA/HSUPA/HSPA+/DC-HSPA+: B1/2100, B2/1900, B5/850, B6/800, B8/900
	MAX-HD2-M-LTEA-W-IP67	Worldwide	LTE Advanced	4G LTE-A: B1, B2, B3, B4, B5, B7, B8, B12, B13, B20, B25, B26, B29, B30, B41	2500WCDMA/HSPA+/DC-HSPA+: B1, B2, B3, B4, B5, B8
	MAX-HD2-M-LTEA-P-IP67	Asia Pacific	LTE Advanced	4G LTE-A: B1, B3, B5, B7, B8, B18, B19, B21, B28, B38, B39, B40, B41	WCDMA/HSPA+/DC-HSPA+ : B1, B5, B8, B9, B19 UMTS: B6 TD-SCDMA: B39
LTEA	MAX-HD2-M-LTEA-WF-IP67	America / Europe/ FirstNet Ready	LTE Advanced	Cellular 1: 4G LTE-A Pro: B1, B2, B3, B4, B5, B7, B8, B9, B12, B13, B14, B18, B19, B20, B26, B29, B30, B32, B41, B42, B43, B46, B48, B66 Cellular 2: 4G LTE-A: B1, B2, B3, B4, B5, B7, B8, B12, B13, B20, B25, B26, B29, B30, B41	Cellular 1: HSPA+ : B1, B2, B4, B5, B6, B8, B9, B19 Cellular 2: WCDMA/HSPA+/DC-HSPA+ : B1, B2, B3, B4, B5, B8

Add-on Feature

Product Code	Description
ACW-107	802.3af/at PoE Injector
ACW-109	PoE Kit for IP55 Outdoor Products
ACW-622	Includes 1x 56V Power Supply Enables 802.3af/at PoE Output Ports (PoE License automatically applied after kit purchase)